

# Acknowledgement of Country

We at BARRUNBATAYI-DILPAATI would like to acknowledge the Traditional Owners of the Land which we stand today the Gadigal Clan of the Eora Nation, and acknowledge Burrun Dalai & Futures planning and support provides services. Dunghutti, Gumbaynggirr, Biripi Worimi, Anaiwan and the Kamilaroi Nations We pay our respects to Elders past, present and emerging, and pay our respects to those of the stolen generation.

# Zain's story



# Artwork



Uncle Richard Campbell is the artist behind the painting.

He says that the smaller circles are the workers, and the big circle are the Young People.

The Rainbow Serpent is inviting them on the journey to the future, the footprints are the Young People moving through to their future.



# BARRUNBATAYI – DILPAATI

Translates to “Dreamtime”-walk slowly

Phonetically Barra buttai – dill put

in Dunghutti



**Uniting**

# FUTURES PLANNING AND SUPPORT

# Background

---



- This pilot is service led by Burrun Dalai Aboriginal Corporation alongside in partnership with Uniting Burnside, to assist Young People transition from Out-Of-Home Care (OOHC) or those who are exiting or who have left care from the ages of 17 up to 25 and would benefit from support to achieve their goals.
- This pilot does not replace leaving care planning and aftercare support, PSP funded service providers and OOHC Case Managers, who deliver as part of day-to-day support and case management of Young People in care.
- This pilot will offer a tiered level of supports with an Intensive Caseworker or a Futures Coach and universal supports. This includes a brokerage element to support young people to achieve their goals.

# **Futures Planning & Support Overview**

- **Background**
- **Program Structure**
- **Footprint**
- **Eligibility**
- **Tiered Level of Support**
- **Triage**
- **Youth Advisory Committee**
- **YPS Vision Statement**
- **Campaign**
- **Programs**
- **Outcomes**
- **Our Future**



# Barrunbatayi-Dilpaati Futures Planning & Support



## PARTNERSHIP

Burrun Dalai & Uniting engaged in a partnership to pilot Futures Planning Service.



## PURPOSE

Engage young people 17-25 who are leaving or have left care, Transitioning into adulthood



## COVERAGE

FPS established in Kempsey, which soon led to the additional footprint and office hubs from Coffs Harbour down to Gloucester



## MODEL

Offer a tiered level of support to young people to achieve their goals and explore future possibilities.

# Footprint

Our Offices are in:-

146/148 Belgrave street Kempsey

8/23 Pulteney street Taree

243 pacific Highway Coffs  
Harbour

18004FUTURE





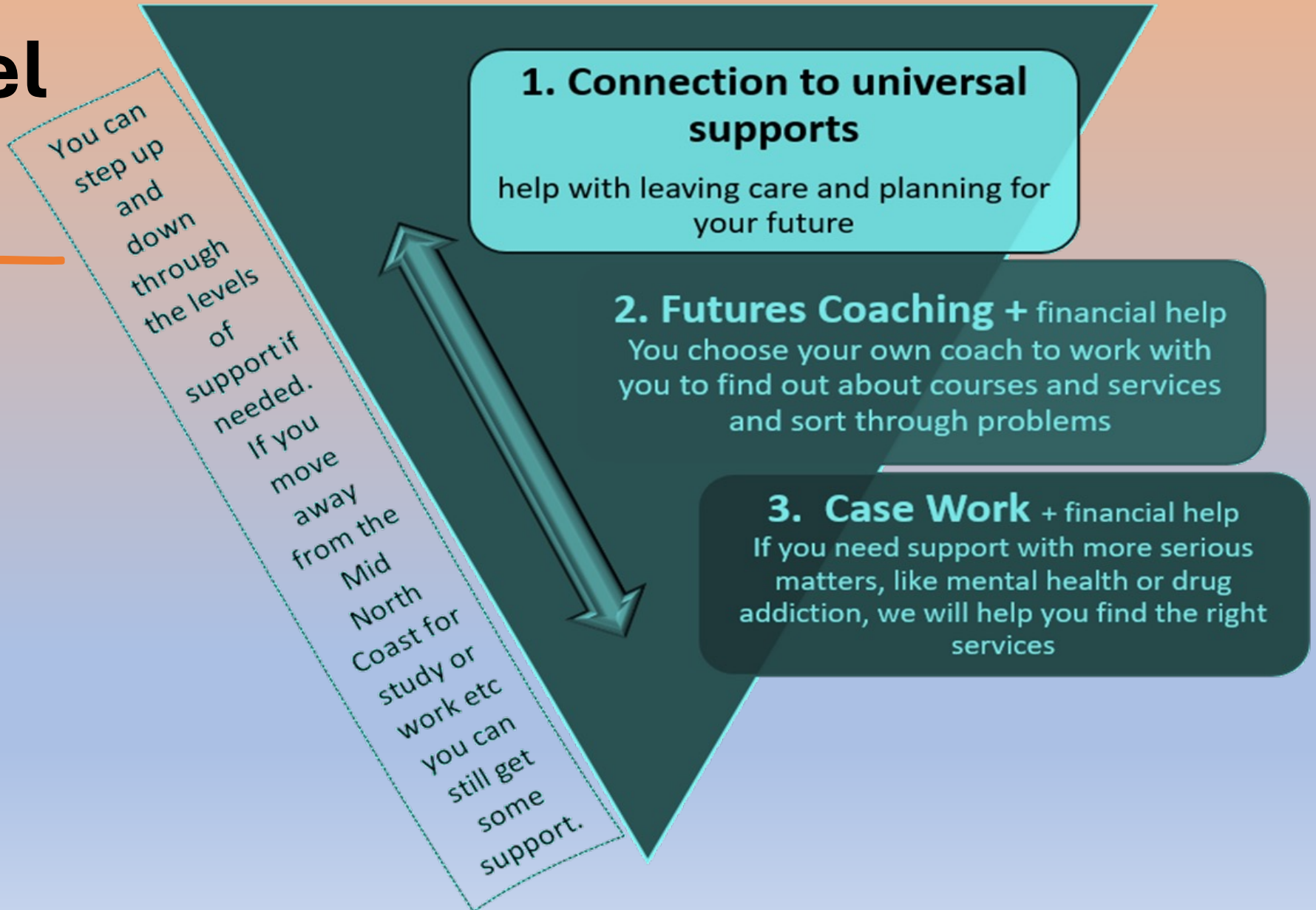
# Eligibility

- Young People aged between 17-25 years, transitioning from Out of Home Care (OOHC) and/or those who have been in Statutory Care, Guardianship and/or Kinship Placement for a cumulative period of at least 12 months.
- The pilot does not replace leaving care planning and aftercare support currently provided by PSP funded Service Providers and/or OOHC Case Managers.

# Tiered Level of Support

## Levels:

- Intensive Caseworker
- Future Coach
- Universal Supports



# Triage Pathway

Domestic Violence	Medicare/ Dental	Income	Safety concerns	Mental Health	Identification	Substance Abuse
Parent or Preg- nant at risk	NDIS	Medicare	Homeless or At Risk	Self Harm / Suicidal	Amendment of LACP	Criminal Legal

**Risk Factors**

Housing or Relocation	Employment	Education	Living Skills
Other Legal	Culturally Specific	Financial	Mentoring

**Needs Identified**

Employed	Stable Housing	Connection to Culture	Connection to Community
Supportive Family	Supportive Friend/s	Enrolled in Education	Not Engaging

**Protective Factors**

Suitable for  
**Intensive Casework**

Suitable for  
**Future Coach**

Suitable for  
**Universal Support**

- ❖ Intensive Caseworker
- ❖ Future Coach
- ❖ Universal Supports

# Our Future Coach's



Don't walk in front of me, don't walk behind me; walk beside me.

# Youth Advisory Committee

- ❖ 25 participants created and formed a committee.
- ❖ Meet quarterly every 3 months.
- ❖ Implemented:
  - Terms of Reference
  - Social Media Campaigns
  - Web pages
  - All promotional material
  - Flyers, billboards, bus shelters
  - TV commercials



# Our Vision

- ❖ Voice
- ❖ Safety
- ❖ Choice
- ❖ Control
- ❖ Equality
- ❖ Stability
- ❖ Community
- ❖ Yarning Up
- ❖ Empowerment
- ❖ Transparency
- ❖ Deadly & Strong
- ❖ Cultural Connections
- ❖ Supported Decision Making



# Campaign

- ❖ Billboards
- ❖ TV Commercials
- ❖ Ambassador D-MINOR



# D-Minor Concrete Pillow





# FPS Commercial



# Programs

---

- Learn to Ride
- Mums and Bubs Fitness Class
- Cultural Camps
- Cultural Days
- Aboriginal Art
- Jewellery Making



# Training



# University



# Motorbike Program

---



# Independence

---



# Cultural Family Photo Shoot



# Learn to Surf





# Learning to Fish

---



# LGBTQIA+ Wellbeing



# Issues and Outcomes

## LEAVING & AFTER CARE PLANS

Young People have had their LACP plans reviewed and amended. Young People have started utilizing their LACP and their financial plans

## IDENTITY

Young People & their families have reconnected back to culture explored their own identity accessed research programs to find their birth families.

## PHYSICAL WELLBEING

ALL participants engaged in a health check. Young People engaged in Fitness Programs. Drug & Alcohol Rehabilitation are now linked in with occupational therapy.

## HOMELESSNESS

Supported Young people secured a lease and/or home.

## MENTAL HEALTH

engaged in trauma informed care and support counselling, participated in a self esteem program. Social & Emotional programs accessing Community Health/GP for treatment utilizing Equine Therapy

## TRANSPORT

Young People have obtained their own vehicles & licenses. YP completed Ride For Futures Program and now have licenses and motor bikes.

## UNIVERSITY/EDUCATION

Young People have entered University and are undertaking Degrees. Young people have engaged back in Education/TAFE completing Year 10,11 & 12.

## TRAINING/EMPLOYMENT

YP have completed Traffic Controller Training and obtained employment YP have completed their white cards secured apprenticeships.

## SELF EMPLOYMENT

Young people have obtained ABN's and started their own businesses, lawn mowing/maintenance/building.

## NDIS

Young people have now been referred and qualify for NDIS support and now have been placed in Supported independent living placement.

## PARENTING

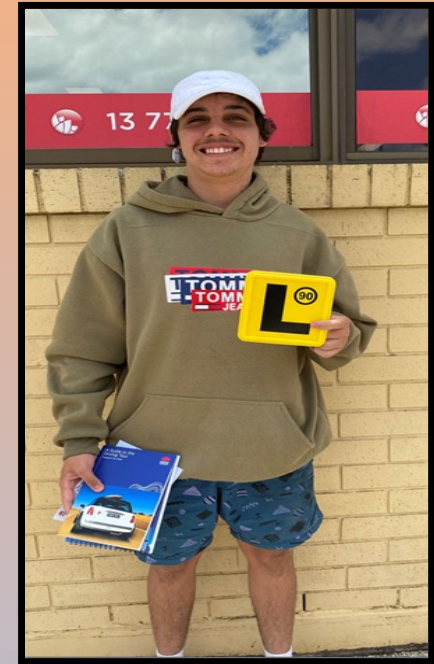
families participated & completed Triple P/Circle of Security parenting programs.

## DOMESTIC VIOLENCE

Families have participated in a programs and supports available.

# Summary of the space we work in

- ❖ Healing pathways into independence.
- ❖ Trauma informed support Care.
- ❖ Ensuring full wrap around services are in place, to provide appropriate quality of care for the young person to become independent.
- ❖ Developing Achievable realistic goal setting Care plans for independence for the future.
- ❖ Supporting the Young Person who has left care or leaving care with a person- centered approach.
- ❖ Reconnection/connection to Family culture identity and community.
- ❖ Self-Empowerment self-esteem supports.
- ❖ Young parents' families support parenting programs bonding and attachment support.
- ❖ More time for young people to transition into adulthood with the support of carers /OOHC agencies.
- ❖ With the correct supports, this could result in positive impacts on mental health of young people. This would have a follow-on effect on community resources with less chance of homelessness , substance abuse issues, justice system , unemployment, mental health issues and related hospitalisations.



**Our Future**